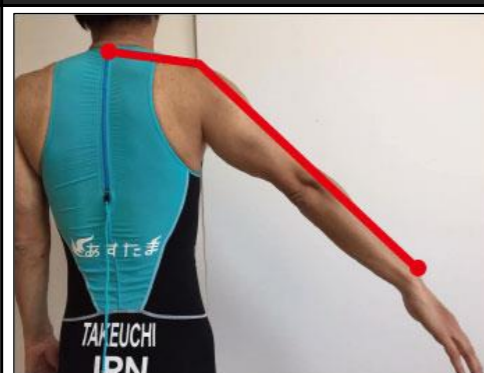


(1) 背丈 (back length)



(5) 袖丈 (from the center of the back of the neck to end the sleeves)



(9) 大腕部圍 (bicep girth)



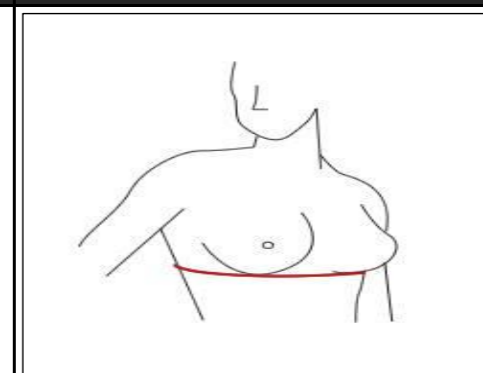
(13) 尻圍 (hip)



(17) 膝上圍 (upper knee girth)



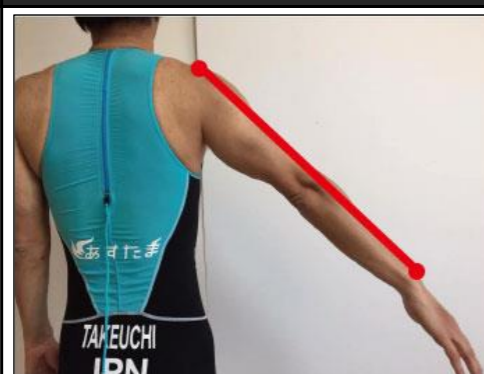
(21) アンダーバスト (under bust)



(2) 首圍 (neck girth)



(6) 袖丈 (sleeve length)



(10) 肘圍 (elbow girth)



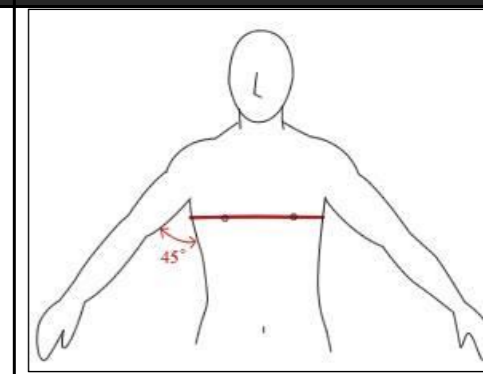
(14) 股下 (inseam)



(18) 膝下圍 (lower knee girth)



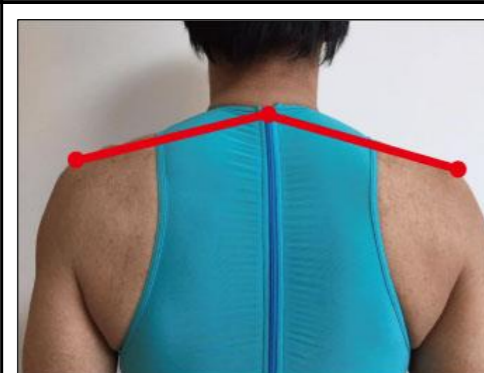
(22) トップバスト (top bust)



(3) 上胸圍 (upper chest girth)



(7) 肩幅 (shoulder length)



(11) 肘下圍 (lower elbow girth)



(15) スネ長 (shin length)



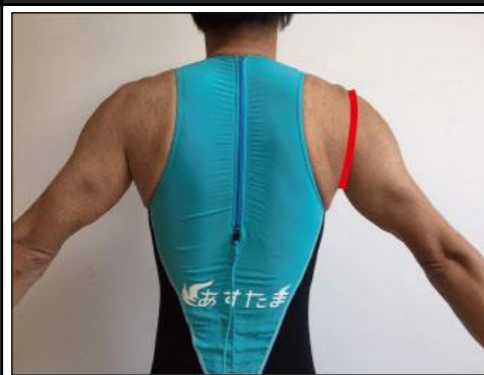
(19) カルカ"圍 (calf girth)



(4) 腹圍 (waist)



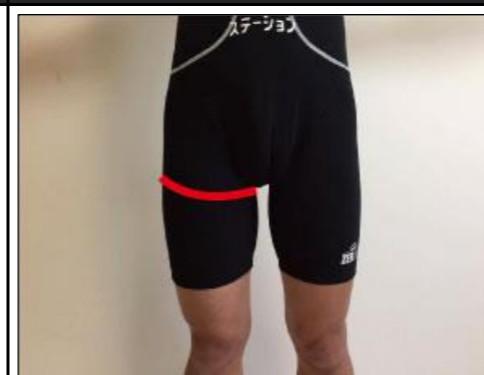
(8) 腕付根圍 (arm scye girth)



(12) 手首圍 (wrist girth)



(16) 太腿圍 (thigh girth)



(20) 足首圍 (ankle girth)

